

# Maisonette

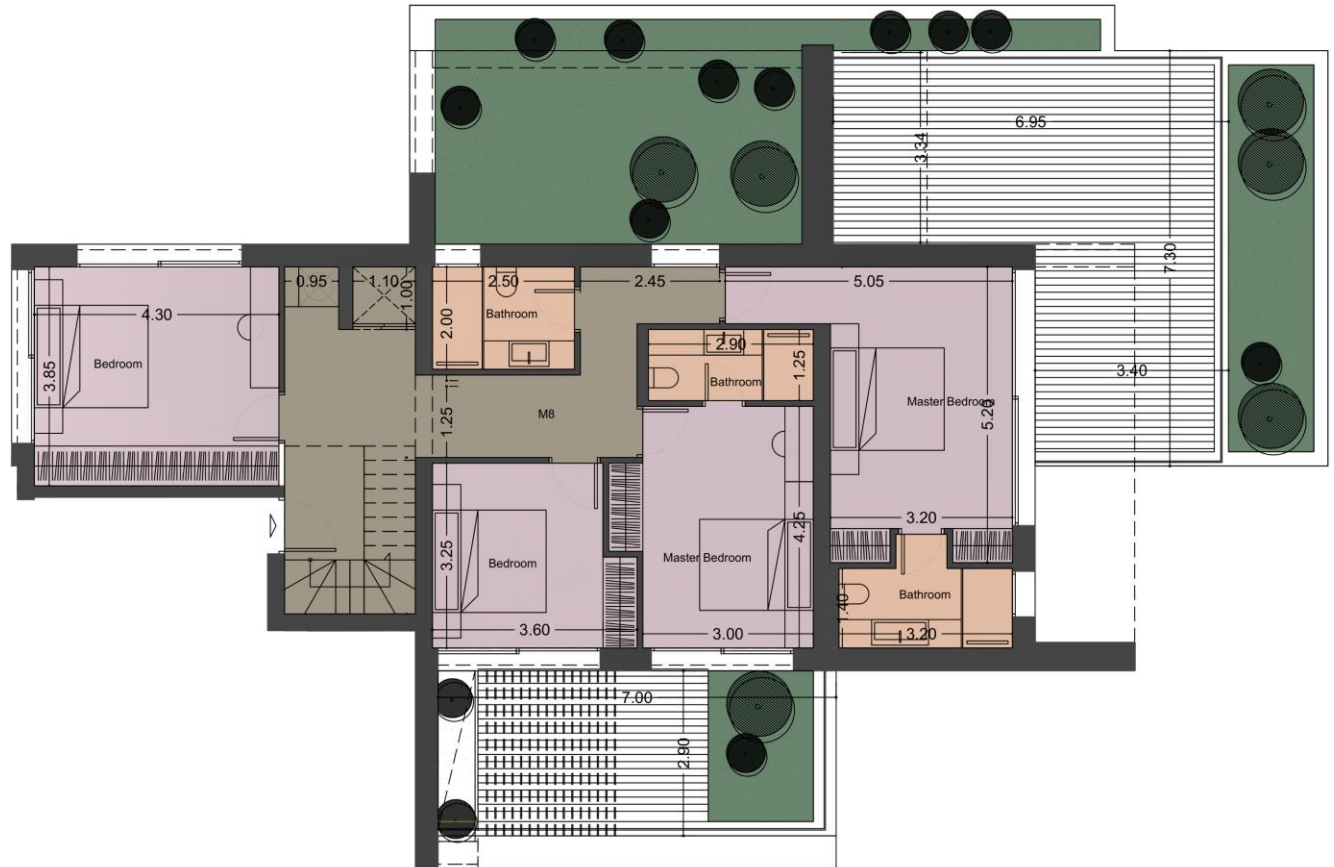
OPAL\_M8

SQM	230
Floor	2 <sup>nd</sup> & 3 <sup>rd</sup>
Orientation	Southeast
Bedrooms	2 masters, 2 bedrooms
Bathrooms	3 bathrooms, 1 WC
Verandas	57 sq.m, 49 sq.m

Pool	✓
Storage room	✓
EV Parking	✓

## Level #1 (2<sup>nd</sup> floor)

OPAL  
GRAMMIKOS GRUP



A+ Energy efficiency



Smart home



Aluminum thermal break frames with double glazing



Pre-installation of natural gas for cooking



Underfloor heating



Security and Safety systems



Cooling & heating system VRF



High quality and natural materials



Solar and Photovoltaic panels



Wide open kitchen & living area



+30 2120008200 / [grammikos@grammikos.com](mailto:grammikos@grammikos.com) / [www.grammikos.com](http://www.grammikos.com)

# Maisonette

OPAL\_M8

## Level #2 (3<sup>rd</sup> floor)

OPAL  
GRAMMIKOS GROUP

SQM	230
Floor	2 <sup>nd</sup> & 3 <sup>rd</sup>
Orientation	Southeast
Bedrooms	2 masters, 2 bedrooms
Bathrooms	3 bathrooms, 1 WC
Verandas	57 sq.m, 49 sq.m

Pool	✓
Storage room	✓
EV Parking	✓



A+ Energy efficiency



Smart home



Aluminum thermal break frames with double glazing



Pre-installation of natural gas for cooking



Underfloor heating



Security and Safety systems



Cooling & heating system VRF



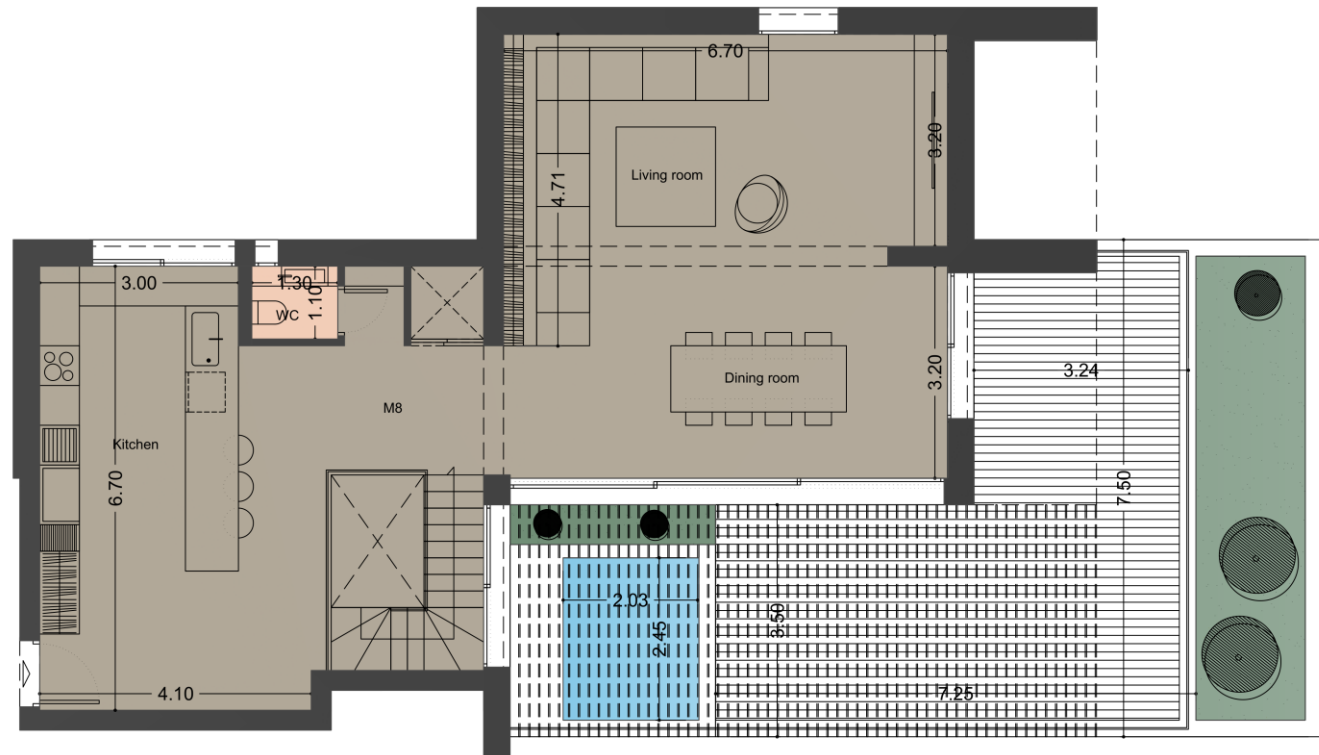
High quality and natural materials



Solar and Photovoltaic panels



Wide open kitchen & living area



+30 2120008200 / [grammikos@grammikos.com](mailto:grammikos@grammikos.com) / [www.grammikos.com](http://www.grammikos.com)